

DIRECTORY

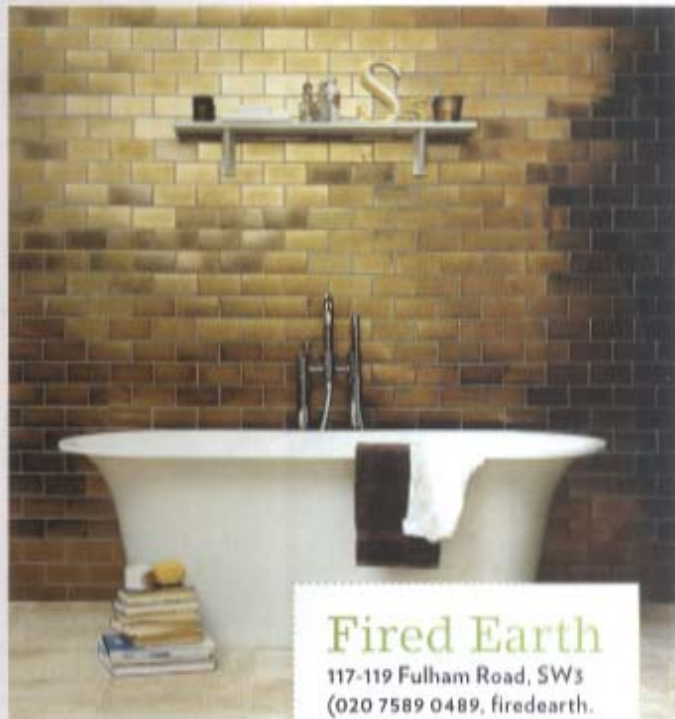
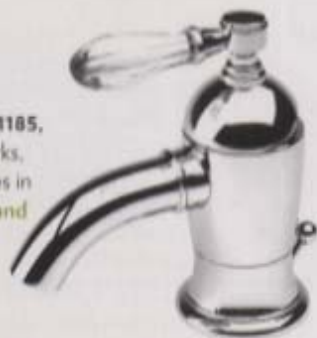
BATHROOM SPECIALISTS

Tap into the latest bathroom trends at London's best sanitaryware stores

WORDS ALANNA FREEMAN

SDS LONDON

183-189 Northcote Road, SW11 (020 7228 1185, sdslondon.co.uk) For high-quality waterworks, look no further than SDS London. It specialises in Samuel Heath's beautifully designed taps and showers, from the simple and chic Xenon range to antique-style power showers and – our pick – the Fairfield Crystal tap (right).



Fired Earth

117-119 Fulham Road, SW3 (020 7589 0489, firedearth.com) As well as beautiful paints and handmade tiles, there's a strong collection of bathroom products here, from architectural stone fittings to freestanding roll-top baths. Make a statement by teaming the Midas bath with floor-mounted taps and a backdrop of burnished tiles (above).

COLOURWASH

1-3 Chiswick Terrace, Acton Lane, W4 (020 8742 7787, colourwash.co.uk) As well as stocking the contemporary bathroom stylings of Laufen, Axor and Dornbracht, this company has just launched its own collection of designer-style sanitaryware. The Pure range features everything from cloudburst shower heads to ice-white countertop basins, all at affordable prices.



West One Bathrooms

45 South Audley Street, W1 (020 7499 1845, westonebathrooms.co.uk) West One supplies bespoke and unusual pieces for bathrooms around the world, and offers everything from Kohler's cool, modern sanitaryware to designer items, such as the tempered-glass and Corian Le Cob bath. Bathroom design heaven.

DRUMMONDS

78 Royal Hospital Road, SW5 (020 7376 4499, drummonds-arch.co.uk) Classic, handmade and quality are the buzz words at this architectural antiques specialist. As well as original bathroom fittings, it sells its own range (based on period designs), some of which can be finished to your specifications.



Bathrooms International

4 Pont Street, SW1 (020 7838 7788, bathroomsint.com) The range of luxury and fine bathroom fittings at this 30-year-old company comes in all manner of unique styles and finishes. From metal or resin basins to wood-finished baths, you'll find all you need to create a home spa that makes a real style statement. >